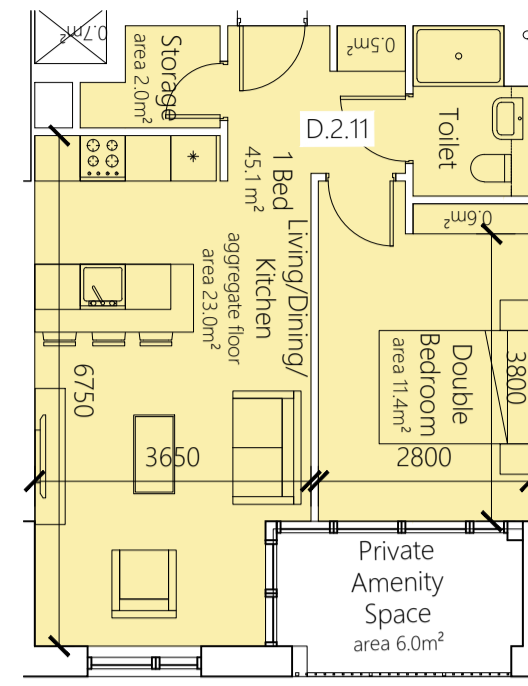
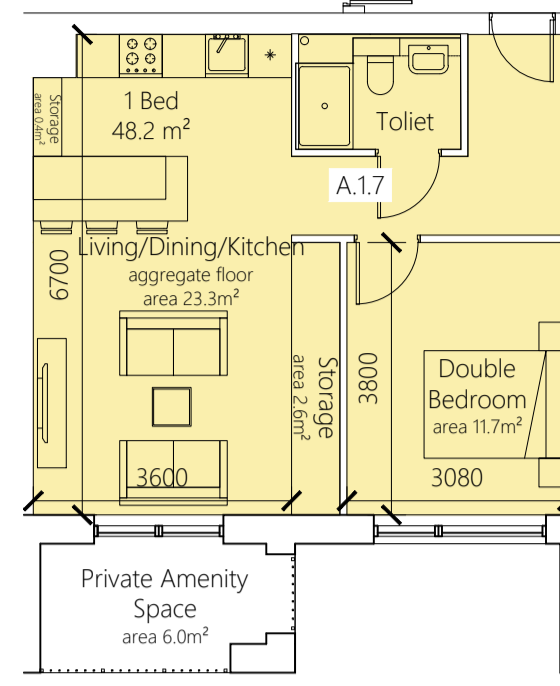


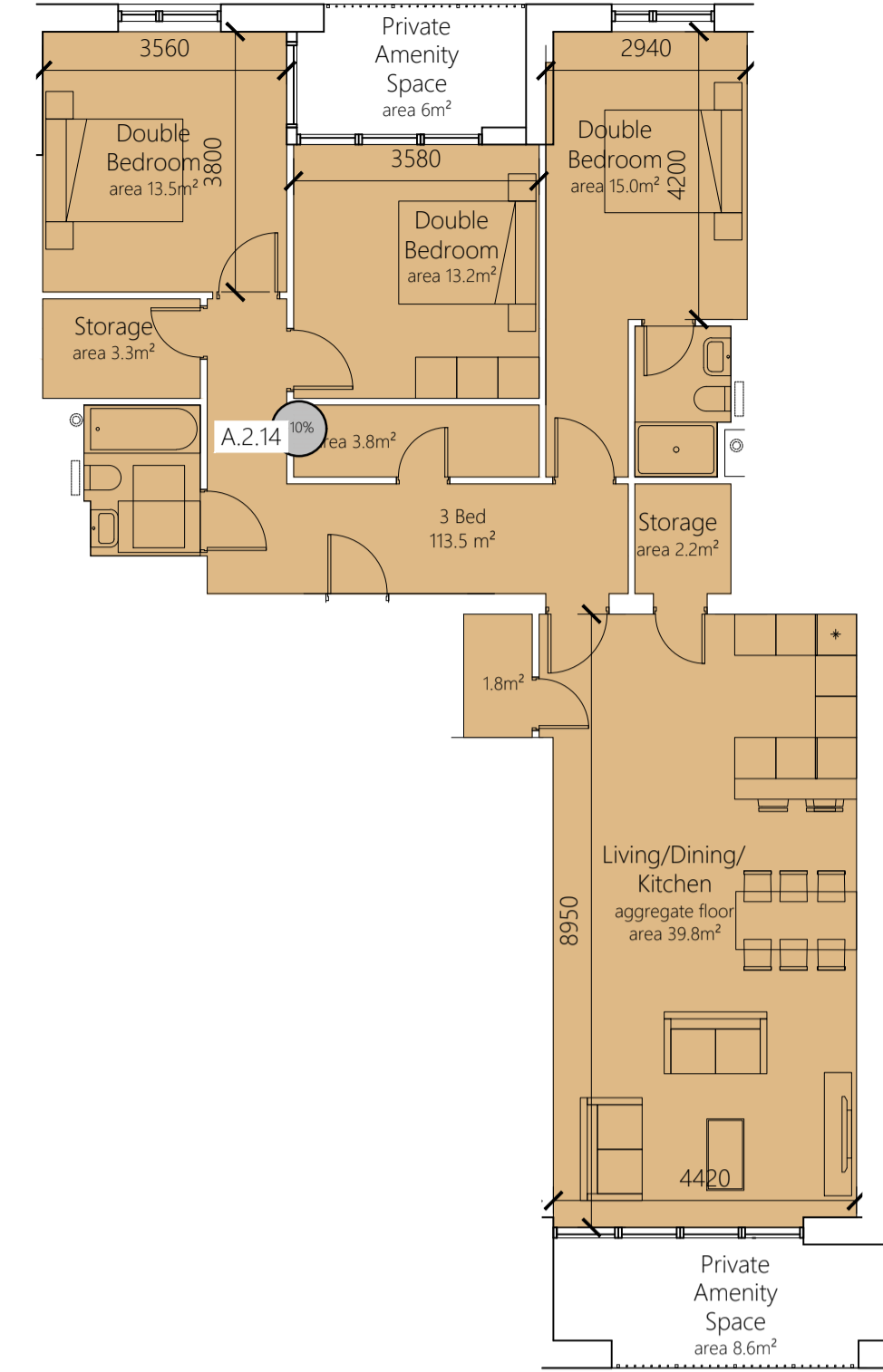
2 BED 3 PERSON i.e. A.3.24, A.4.34 TYPE: 2B3P ZU
AREA: 87.3 m²



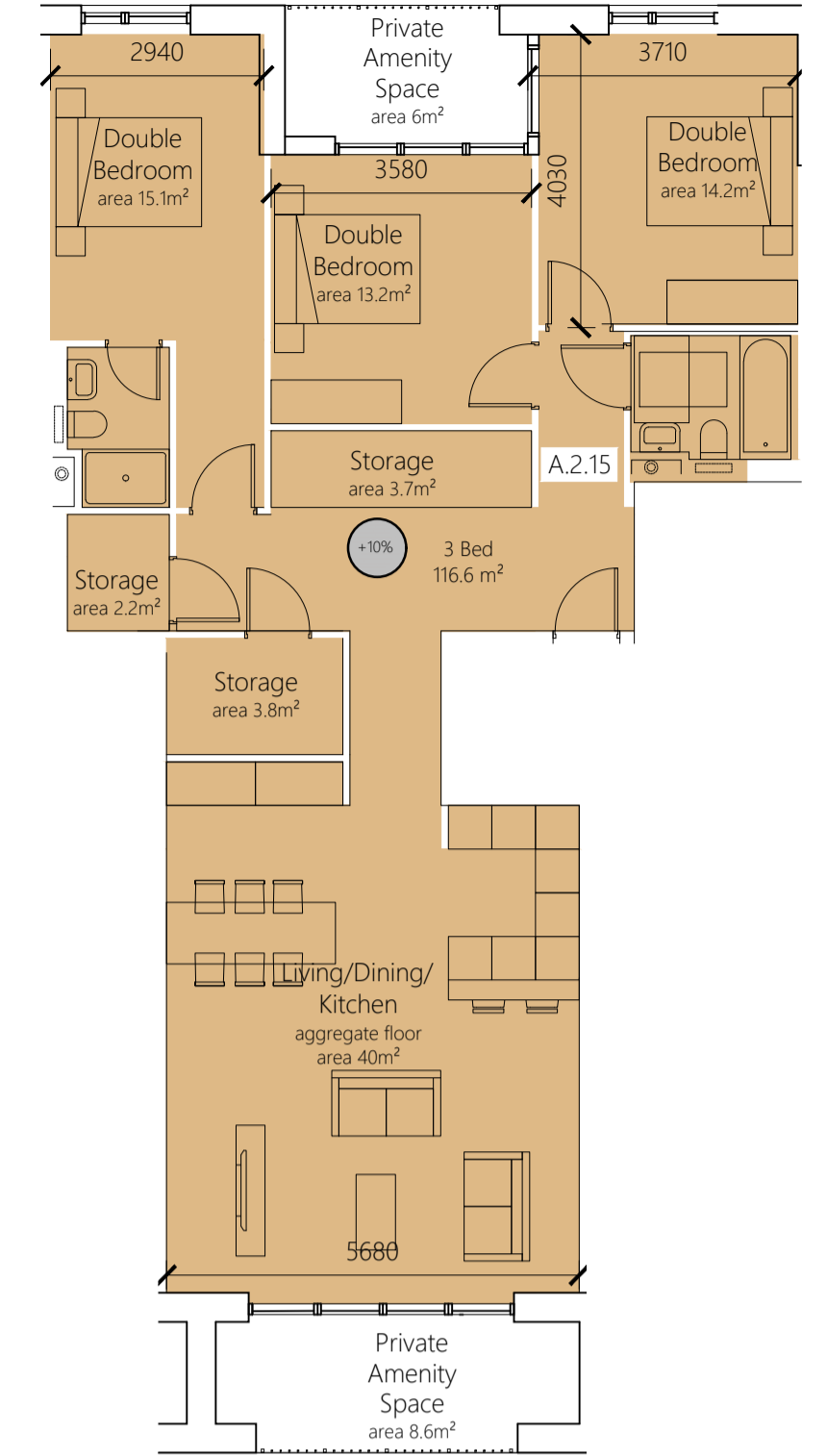
1 BED 2 PERSON i.e. D.2.11, D.3.19, D.4.26 TYPE: 1B2P ZT
AREA: 45.1 m²



1 BED 2 PERSON i.e. A.1.7, A.2.16, A.3.26, A.4.36 TYPE: 1B2P D
AREA: 48.2 m²



3 BED 5 PERSON i.e. A.1.5, A.2.14, TYPE: 3B5P ZR
AREA: 113.5 m²



3 BED 5 PERSON i.e. A.1.6, A.2.15 TYPE: 3B5P ZQ
AREA: 116.6 m²

LEGEND

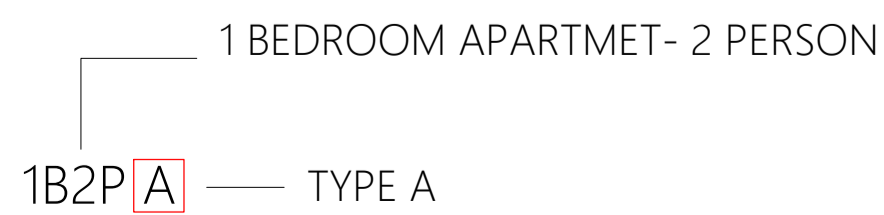
- 1BEDROOM APARTMENT
- 2BEDROOMS APARTMENT
- 3BEDROOMS APARTMENT
- 3BEDROOMS APARTMENT

KEY:

- 1B2P- 1 BEDROOM APARTMENT- 2 PERSON
- 2B4P- 2 BEDROOM APARTMENT- 4 PERSON
- 3B5P- 3 BEDROOM APARTMENT- 5 PERSON

+10% APARTMENT AREA 10% OVER MIN. REQUIRED AREA

EXAMPLE:



F.F.L. AND ORIENTATION VARY ACROSS UNITS AND REFER TO FLOOR PLANS FOR SPECIFIC INFO